

MatchUp *For Extraordinary Merge/Purge Power*

Now you can merge and/or purge files in different formats with different name, address, and city/state/zip structures. No changing structures, No importing.

MatchUp is the perfect tool to transform a relational database into a flat file - or vice versa. And, it's so easy to update a master file with new data.

The Analyzer

You can change processing results directly in the Analyzer - which records are output, which are considered dupes. And, record groups can easily be shown or hidden so 'clutter records' don't distract you. You have this control because the Analyzer is working with the actual source data. Display any field you want. Your view is not restricted to the fields used in the matchcode.

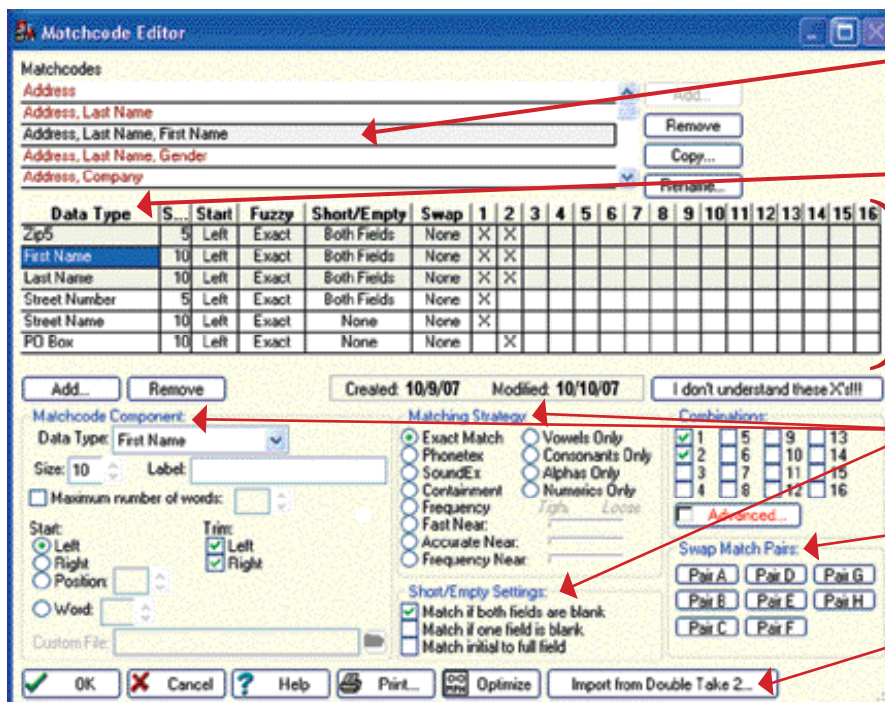
You can also add, remove, resize, and re-sequence columns to produce an on-screen and on-paper output that best shows your data.

MatchUp Savvy

- Process dBASE, ASCII, Excel, Access, SQL, and all ODBC accessed files directly
- Fast processing, 10-50 million records per hour
- Process files with different field structures
- Assign priority for eliminating duplicates
- Split name, address, and city/state/zip fields
- Get 17 different reports with user-modifiable headers
- Output reports to a printer or a file
- Display, print and process duplicate records in a wide variety of ways

MatchUp allows for the use of up to 16 matching rules in a single run for quick, thorough results. You can set up one rule for matching on addresses, a second on phone numbers, etc. If any matchcode hits, duplicates are recorded. Easily create unique matchcodes that look for any length of data from any place in any field.

No other application gives you such precise control and flexibility



Select one of MatchUp's supplied matchcodes or create your own.

This lists each data type of the highlighted matchcode.

Only MatchUp allows you to process up to 16 matchcodes (matching rules) simultaneously.

You can use any part of any field, and can set each component separately.

Swap matching matches like "John Smith" to Smith, John."

Import matchcode setups from previous versions of MatchUp and DoubleTake.

Why choose MatchUp from Melissa Data?

- Free technical support
- Available as standalone software or programmable API
- Full 30-day money-back guarantee

System requirements:

- Intel Pentium III or better
- Windows 2000 or better
- 64 MB of RAM min., 128 MB recommended
- 10 MB of available hard disk space